

## **Apartment 24, 85, Glenbrook Glenthorne Road, London, W6 0DJ**

**Guide Price £795,000**

Modern Urban Living at Glenbrook apartments, Glenthorne Road W6

**Location:** Situated in the vibrant neighbourhood of Hammersmith, The Glenbrook apartments offers the perfect blend of urban convenience and tranquil living.

**Prime Position:** This 3rd-floor apartment boasts stunning views of the surrounding city-scape and is only a short walk away from the picturesque Thames riverside.

**Contemporary Design:** Step into a sleek lobby and discover a modern oasis designed for sophisticated urban dwellers.

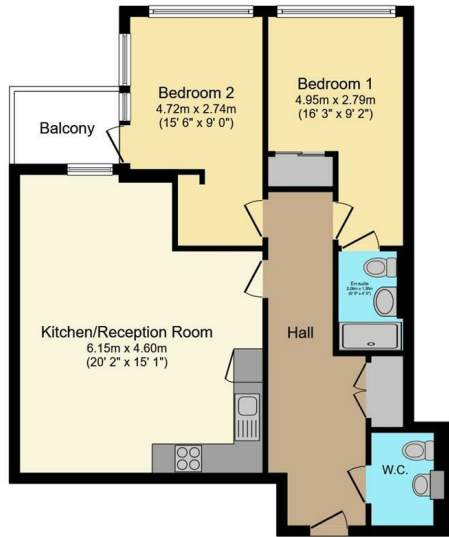
**Spacious Interiors:** This two-bedroom, two-bathroom apartment features an open-plan layout flooded with natural light, creating a bright and airy ambiance throughout.

**Private Balcony:** Enjoy the outdoors from your own private balcony, perfect for morning coffees or evening relaxation.

**Luxurious Amenities:** The master bedroom includes an en-suite bathroom for added comfort and convenience, while the second bedroom offers versatility as a guest room or home office.

**Priced to Sell:** With a competitive price of £795,000, this apartment presents an exceptional opportunity to invest in modern urban living in one of London's most desirable neighbourhoods.

Don't miss out on the chance to make this stylish apartment your new home. Contact us today to arrange a viewing!



Total floor area 71.1 m<sup>2</sup> (766 sq.ft.) approx

This floor plan is for illustrative purposes only. It is not drawn to scale. Any measurements, floor areas (including any total floor area), openings and orientation are approximate. No details are guaranteed, they cannot be relied upon for any purpose and they do not form part of any agreement. No liability is taken for any error, omission or misstatement. A party must rely upon its own inspection(s). Powered by www.focalagent.com



Energy Efficiency Rating		Environmental Impact (CO <sub>2</sub> ) Rating	
Current	Potential	Current	Potential
A	A	B	B
B	B	C	C
C	C	D	D
D	D	E	E
E	E	F	F
F	F	G	G
G	G		

